



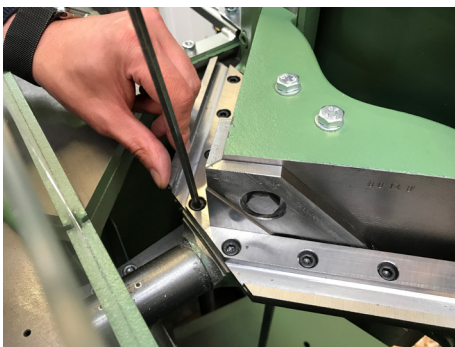
Jack Siwinski, Technical Services Manager at LION, gives you his guide to the safest way to change the blades on your Morso or similar mitre cutting guillotine.

Jack says: *“It’s a simple job that many framers can do almost with their eyes closed. I do speak to some people who don’t realise they need to adjust the bottom blades to account for the very slight variation in blade thickness that occurs from pair to pair. Always remember to keep your blades sharp - and make sure that whoever sharpens them for you is using the hollow grind method specified by Dan-List.”*

1. Lock down the foot pedal using the pedal adjuster and a 17mm socket spanner. Carefully slide the rebate supports out.



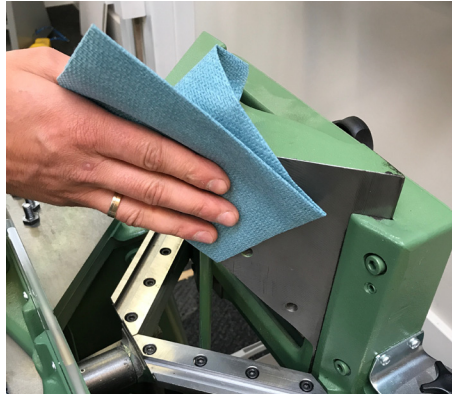
2. Loosen the bottom blades with a T-handled 5mm hex key and pull them away.



3. On each side, loosen and remove the bolts. First the top and bottom ones. Finally the middle bolt and carefully lift the blade and place it on a safe surface.



4. Clean the blade holder with a dry, lint-free cloth.

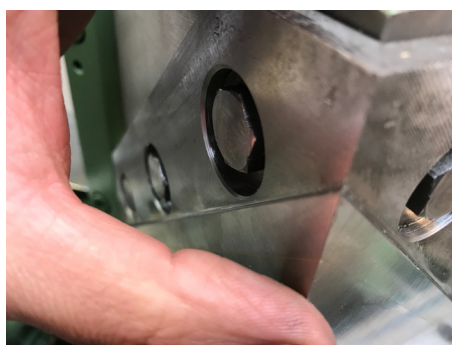


5. It is important to understand that the hole in the bottom and top blades are larger than the bolts. This allows you to make fine adjustments.

Fit the new blades in turn, starting with the middle bolt. Hand-tighten the bolts only at this stage.



6. Using a large, flat-bladed screwdriver (never a hammer!) carefully adjust the positions so that the bottom edges of the blades are aligned. The point where the blades meet at the front should be flush, with neither standing proud.



7. Fully tighten the bolts in the upper blades.



8. Adjust the bottom blades away from you so that they just meet the top blades. Start at the front and work your way towards the back while raising the blades with the foot pedal.



The fixed bottom blades should be a smooth sliding fit against the moving blades. make a test cut using a sheet of copier paper or similar.

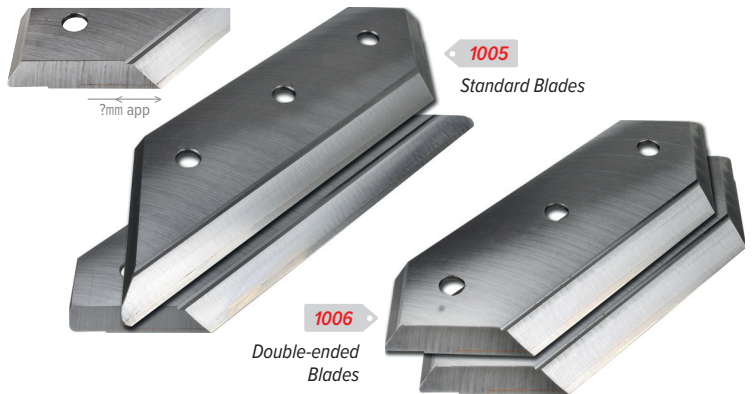
Re-fit rebate supports and top guard.







## Standard Morso Blades



Made by Morso using special Steels produced in Austria, which gives them an excellent quality and a very long life.

Hardness of the brazed-in edge of Standard blades is Rockwell HR64 where other brands are often max. HR58.

Morso blades are a little more expensive than other brands but some say they will last up to 6 times longer. These blades do not fit Cassese mitre guillotines. Use 17mm socket spanner.

You should ideally have three pairs of blades - one on the machine, one ready to put on and one away for sharpening.

**1005** MORSO STANDARD Blades £208.83

**DOUBLE-ENDED VERSION** Standard blades, made so they can be fitted either way round to give twice as much use out of each regrind. They limit you to mouldings up to 30mm wide.

**1006** MORSO D/ENDED Standard Blades £252.67



## ECO 60 Morso Blades



A lower cost alternative to the Standard blades.

Made from one solid piece of steel, with a hardness of HR 60. This compares with the Standard Morso blades which have a hardness of HR 64. This blade also fits Cassese CS55.

Importantly, only app 12mm of the edge material on ECO 60 blades is hardened, which reduces the number of possible re-sharpenings. Thus the total number of cuts and the life of the ECO 60 blades will be less than on the Standard blades.

**9488** Morso ECO 60 Blades £156.33



## Safety Blade Box

These wooden boxes are strong and safe. They protect your blades during transit. Lid is held by two screws and is reversible for quick addressing.

Newly sharpened blades can be blunted if they bounce around in the box. We pack yours with paper and foam. We suggest that you do the same when you send them to us.

**2492** Wooden Blade Box - only £15.95



LION Picture Framing Supplies Ltd

148 Garrison Street, Birmingham B9 4BN

Tel: 0121 773 1230 info@lionpic.co.uk

Open 08.45 - 17.00 Monday to Friday

lionpic.co.uk

Any prices quoted are correct as at September 2017. Please check before ordering.

